

Kislev / Tevet 5779

Volume 73, No 3

Jan./Feb 2019

TEMPLE SINAI NEWS



COUNT DOWN TO

P

U

R

I

M

Check Inside For:

Information on our Purim activities

Youth Honor Martin Luther King Jr.

Artist-in-Residence Weekend information



Tu B'Shevat (the 15th of Shevat) will be here soon (January 21). Then Purim, then *Pesach*. An interesting variety of holidays that takes us from winter to spring.

One might ask, "Is there a connection to be found between these three festivals? What, if

anything, do Tu B'Shevat (the New Year of the Trees), Purim (a commemoration of Queen Esther and Mordechai's efforts to save the Jewish People), and *Pesach* (a celebration of the exodus from Egypt) have in common?" The answers are "Yes" and "the number 4." That's right, the number four appears in all three holidays.

Typically, we associate the number four with *Pesach* and, specifically, the *seder*. The four sons, the four questions, the four cups of wine (whose source is the four verbs of freedom found in the Torah).

But the number four is also significant with regard to Tu B'Shevat and Purim. In the Mishna, the earliest Jewish code of law, we are taught that there are four New Years:

- 1) The first is the New Year for kings and for festivals (1st of *Nisan*).
- 2) The second is the New Year for tithing animals (1st of *Elul*).
- 3) The third is the New Year for the years (1st of *Tishrei*).
- 4) The fourth is the New Year for the trees (15th of *Shevat*).

In addition to Tu B'Shevat being the 4th of the New Years, we celebrate this holiday by means of fours. The Tu B'Shevat *seder* features four cups of wine, each one a little darker than the previous one as we increase the amount of red wine added to white.

Additionally, we celebrate trees by eating four types of fruits and nuts:

- 1) One that has a shell or an outer skin which is not edible (almond, orange);
- 2) A second that is a fruit with an inner pit that is not eaten (carob, date, olive);
- 3) A third that is a fruit having both an inner pit and an outer skin that are not eaten (mango, avocado);

- 4) And a fourth fruit that can be eaten in its entirety (grape, fig, strawberry).

The *kabbalists* (Jewish mystics) have suggested that, "The overall symbolism in this system is that the parts that can be eaten represent holiness, the inedible parts (pits) represent the impure, and the shells protect the delicate holiness inside" (*The JPS Guide to Jewish Traditions*, p. 253).

The holiday of Purim has a pair of significant fours. First, there are the four primary personalities: King Achashverosh, Queen Esther, Mordechai, and Haman. But even more important are the four *mitzvot* (commandments) associated with the holiday:

- 1) The reading of *Megillat Esther* (the scroll of Esther);
- 2) *Seudat Purim* (a Purim feast);
- 3) *Mishloach Manot* (sending gifts to friends);
- 4) And *Matanot le'evyonim* (gifts to the needy).

The appearance of so many fours within these three holidays brings us to the question, "Is there something special about the number four?" Yes, yes there is. When we see the number four we are inclined to think of God, of the world and of the Jewish People.

The name of G-d, which appears throughout the Bible, but which Jewish tradition says we are not permitted to pronounce, is spelled *yud-hey-vav-hey* (YHWH in Latin script). Compromised of four letters it is known in Greek as the tetragrammaton. It is the name that G-d uses when introducing G-d's self to Moses in the Book of Exodus.

Our tradition also speaks of the "four corners of the earth" when referencing the entire world, and the four directions (north, south, east, west) are mentioned in the *Torah* when G-d blesses Jacob and tells him that his descendants will "burst forth" in all four directions. Every morning when we recite the *shema* and hold the *tzitzit* (the fringes on the corners of the *tallit*), we are demonstrating the hope that G-d will bring our People together *may'arbah kan'fot ha'aretz* (from the 4 corners of the earth) in fulfillment of a promise that G-d made for a messianic future. Thus, the number four also represents the assurance that one day the world will be enveloped in peace.

So eat your almonds and your mangos on Tu B'Shevat and send gifts to your friends and to those in need on Purim. And enjoy four cups of Manischewitz come *Pesach*. And may all of our observances of the festivals remind us that we must pray for and work for a world of peace.

ARTIST-IN-RESIDENCE WEEKEND

In partnership with the Temple Sinai Cultural Series Committee



The Bible Players



Catch Judaism's hottest comedy team: The Bible Players, as they use improv and comedy to teach Jewish values to all ages.

FEBRUARY 8th, 9th AND 10th

FEB. 8TH: Teen Shabbat Dinner at the Rabbi's house with The Bible Players - **RSVP by 2/6/19**

FEB. 9TH: Tot Shabbat ,
Shabbat Experience and Mini
Minyan with The Bible Players
Congregational Lunch with
The Bible Players - **RSVP by 2/6/19**

FEB. 10TH: Religious School Program
featuring The Bible Players

Executive Director's message

Ben Wachstein



A few years ago a friend asked me what I do as the executive director of a synagogue. I began to rattle off my daily, weekly, and yearly activities. His eyes glazed. I laughed. I paused. I took a breath. And then I said, simply, that my job is to advance the agenda.

And then I wrote the following:

- I do this by staying on top of the current trends in synagogue and non-profit management.
 - I do this by following new technologies that will benefit my colleagues, our members, and the work we do together.
 - I do this by striving to learn more from others so that others may learn more from me.
- I do this by keeping my door open to our staff and members of the community who have new ideas, or older ideas.
 - I do this by allowing—and actually asking—others to convince me that I'm wrong when they think I am wrong.
 - But mostly I do this by understanding that I need to fully embrace the agenda to advance the synagogue's agenda.

I'm not always (or often?) perfect at adhering to everything above. But each day, each month, and each year I work to get better, to be better. I am fortunate to have come to Temple Sinai where I have the opportunity to work with a truly talented staff along with dedicated and enthusiastic volunteers who help me be a better me, so I can better serve Temple Sinai.

At this time of the year it's helpful to reflect on who I am and the work I have done. I'm thankful to have this opportunity to make a difference at Temple Sinai, because Temple Sinai has already made a significant difference to me.

So, do me a favor, and read my little discourse above. Please know that I welcome your visits, your input, your advice, and your company. It helps me. It helps all of us.

L'shalom.

Planning on attending college in the spring? Let our office know where you'll be next fall!

We'd love to stay in touch!

Contact the Main Office to give us your updated info.

president's message

Lauren Gladstone



Last summer I celebrated my birthday by visiting Switzerland with my family. Switzerland has a special place in my heart, as it is the country in which I've spent the most time outside of the US. My mother's family fled to Switzerland in 1942 and lived there for 22 years. It is the place where my parents met, and, as a teenager, I had the privilege of attending summer camp in the Swiss Alps.

Aside from the majestic scenery, the meaningful trip afforded me the opportunity to share my history with my family. We visited the hotel at which my mother and her family were permitted to live from 1942 to 1945 since they were not allowed to rent or buy a home. We brought photos of my mother and her family and stood in those exact spots. We even took our own photos in that location while holding the old black-and-white photos. I led my family around Basel and shared the stories my mother passed on to me of what had happened in those locations. I

pointed out where she went to school, where she would play, where she would have a pastry with her mother, as well as where my grandfather and great grandparents are buried.

We had the amazing opportunity to walk inside the art gallery that my grandfather purchased in 1947. The building is now owned by the University of Basel, and it is used for conferences and fundraisers. We were given a tour of the entire building— from the cellar to the attic. We found some relics that had belonged to my grandfather and some writing on the beams in the attic that date back to that time. I tried to imagine what it was like more than 70 years ago, filled with people, furniture, and paintings.

Before leaving Basel, we drove to the suburbs to visit my mother's home, which her family was allowed to purchase in 1947. It is now the home of a theological Jesuit seminary. We were given a tour of the house and witnessed how this grand home was transformed into a school. We compared photos that we brought along to see the physical changes. The expansive living salon was converted into a lecture hall and offices. The bomb shelter (the home was originally built for a high-ranking Nazi officer once Switzerland was conquered) that had been used as a wine cellar was filled with old transcripts and files. The pool was filled in and now used as a patio. On our way out, we passed the foyer and painted on the wall in the entrance way was a quote from Isaiah 40:8 in Hebrew:

"Grass withers and the flowers fade, but the word of our G-d exists forever."

At first I was completely shocked to see Hebrew writing in a Jesuit school. It wasn't until I returned home that I translated the quote. The sentence swirled around my head and I took a walk to try to make sense of its meaning and relevance. I thought about the trip and the walks down "memory lane." It reconnected me with my mom, who is no longer with us. It reconnected me with part of my roots. I thought about how so much of it changed; yet it was still familiar. I realized that everything changes. Everything evolves and nothing stays the same, yet the inner essence of the spirit and traditions to which I connect, remain. These places may look different or operate differently, yet I am still connected to them.

I often find my mind drifting back to those magical moments. It has made me reflect on Temple Sinai's 77-year tenure, which has a rich history. It may not look the same, sound the same, or operate in the same way, but it is still a place to connect to Judaism and a place in which we can connect with each other. We are deeply rooted in our strong traditions as we continue to pave the past for future generations.

Ann Newman education update

Early Childhood Director

Beth Rabinowitz



When you first considered sending your child to preschool, your child's education and wellbeing was at the forefront of your decision making. I am assuming you were searching for a school with experienced, loving teachers, an age-appropriate curriculum, an outdoor play space, and a philosophy that fit into your family's values. You might have factored in school hours, cost, and location. These are all key factors, when making this very important decision, but did you ever consider what the school experience would be like for *you*? Some families are pursuing a school solely for childcare, whereas others are looking for broader connections. There's a different mindset when choosing a childcare facility for your children, rather than a community that meets the desires of your whole family.

Each day, when you drop off your child, you are confident in the knowledge that your child is learning, playing, and is kept safe. This is the intention of our school, but there is a larger objective here. One goal of our program, is that as your children are making new friends, you are too. As the teachers educate children on Jewish traditions and holidays, our hope is that parents also want to learn and keep these traditions going in their homes. While your children are attending programs at school, we hope you come back during the weekend or evenings for special activities such as Tot Shabbats, Bingo, Challah Making, and Dueling Pianos.

The timeframe of your child's preschool education is only a few years, but the friendships and experiences can impact a family for a lifetime. Over the years, families become carpool partners, they hang out together during soccer and dance practices, help in times of need, and will be there during celebrations. Most people want to be part of a community, but choosing the right community takes some intention. Finding a "home away from home" is not always so simple. It can be easy to find good, quality child care, and if that is what a family is looking for then there are plenty of them. If you want to surround yourself with people who care about Jewish values, our traditions, friendships, a place for life cycle events and just plain old fun, then Temple Sinai is the place for you. Take advantage of this time, build those friendships, enjoy what we have to offer, and I promise this will become your very own community.

I wish you a very happy new year and I hope you feel the uniqueness of our special preschool community.

**THIS WINTER WHEN BAD WEATHER HITS
STAY UP TO DATE
WITH TEMPLE SINAI
GET THE SCOOP ON CLOSINGS AND MORE AT:**

 **@ TEMPLE SINAI DRESHER**

 **@ TEMPLE SINAI DRESHER**

 **VISIT OUR WEBSITE @ WWW.TSINAI.COM**

M A Z A L T O V MOMENTS

Mazal Tov to grandparents Ellyn & Stephen Karp and parents, Lauren & Richard Shusman on the naming of their child granddaughter, Ruby Rose Shusman, respectively.

Mazal Tov to great-grandparent Herma Abramson, grandparents Jeri & Len Zimmerman and parents Chelsea & Elliot Busch on the naming of their daughter, Maya Stav Busch.

Mazal Tov to parents Dan and Hara Howard on the birth of their son, Nolan Reed Howard.

Mazal Tov to grandparents Judy & Jay Marku, and parents Steven & Meredith Marku on the birth of their son, Aaron Samuel Marku.

Mazal Tov to grandparents Natalie & Ray Kail and parents Benjamin & Debbie Kail on the birth of their daughter, Emma Yunker Kail.

Mazal Tov to parents Jenn & Brian Robins on the birth of son Cole Asher Robins.

Mazal Tov to Rebecca & Roy Jackel on the engagement of their daughter Carissa to Steven Romantz.

Mazal Tov to Toby & Martin Adler on the wedding of their granddaughter Ilysa Adler Wolf to Mathew Wolf.

Mazal Tov to Janice & Alan Inselberg on the birth of their granddaughter, Zoe Jane Oliver.



**Enroll today...
your child will
thank you!**

CAMP AMERICA DAY CAMP

"Developing future leaders since summer 1967"

www.camp-america.com
215-822-6313

Catch the Spirit!
CAMP AMERICA
JULY 2018
ACCREDITED

WINNER
Bucks Happening
2018

the BEST 2018
TheIntelligencer

WHAT WE ACCOMPLISHED IN...



- We had record attendance at our High Holiday services.
- In the last year, we had 13 babies born that each have a sibling in the school and 12 of them are in our Infant Center.
- Our Israel at 70 Soiree was a major success.
- Project HOPE was a big success.

- We lead meaningful discussions in our 9th grade *Shevet*/Brotherhood Group about difficult, but important topics that are being talked about in headlines today. Our good work was featured on NPR's Morning Edition.

- Our congregant Stu Weitz, was featured in the *Jewish Exponent*.

- Our own Jeff Workman was honored at the 21st Annual Man of the Year Event for the Mid Atlantic Region as a Man of the Year honoree.



- More Religious School programs and events.
- An amazing summer of fun at Camp Maccabee.
- A year of even more baby namings and Bar and Bat Mitzvah celebrations.
- Men's Club World Wide Wrap.
- Temple Sinai's production of *Oklahoma*!

WHAT'S AHEAD FOR US IN...



SAVE
THE
DATE

NIGHT

February 2, 2019

6pm

Temple Sinai

PARENTS NIGHT OUT
DUELING PIANOS

WE'LL BRING THE PIANO BAR TO YOU!
TWO PERFORMERS ON TWO PIANOS
DELIVER AN ALL-REQUEST,
INTERACTIVE SING-ALONG PARTY.
A FUN NIGHT WITH APPETIZERS,
DESSERT, DRINKS,
AND FRIENDS!

Benefitting
The Ann Newman Preschool
and Infant Center

Pajama party and babysitting will be available
for kids 3 months to 10 years

TSMC's

World **W**ide **W**rap

all Jews
wearing Tefillin

Sunday, Feb 3RD, 930AM, TS Sanctuary
We'll provide & teach everything!
Q's - Jeff Workman tsmctreasurer@gmail.com



education update

Director of Education

Shira Weissbach




I have always been personally and deeply connected to Israel. I first traveled to Israel with my family as a child and have been privileged to return many more times since, for both family trips and professional opportunities. I am passionate about the teaching of Israel and I believe it is more important now than ever. There is a well-documented increasing divide between American Jews and Israel, especially among younger Jews. I believe that education is the key to bridging that gap.

This year, I have had the honor of pursuing a graduate certificate in Israel education. The program is being offered, for the first time, by the iCenter for Israel Education and George Washington University (GW). The iCenter, located near Chicago, offers skills and resources to help professionals and educators inspire and teach students about

Israel. Along with 23 of my peers, who work for synagogues, Federations, Hillel International, and day schools, I have participated in online coursework and attended two seminars in Chicago this past fall. This spring, we will travel to GW for a seminar, and the culminating seminar will be held in Israel this summer. The coursework focuses on Jewish-identity development, American Jews' relationship to Israel in the 21st century, politics, sociology, arts and culture, and demography.

I have already learned so much from this unique experience. As a result of this program I plan to reevaluate and assess how Israel is integrated into all aspects of our Religious School curriculum from the youngest children to our teens. I will be sure to share updates about my participation in the program this summer. I'm so grateful for the chance to learn with leaders in Israel Education and to be on the cutting edge of what's to come in the field.

DID YOU KNOW? 

Temple Sinai is on
Instagram



FOLLOW US

@Templesinaidresher

Refuah Shlaymah

Alan Shore
Ellyn Klein
Evy Snyder
Josh Brody

the scoop with sydnie

Youth Engagement Coordinator

Sydnie Ciment



Martin Luther King Jr. Day is typically a day of service for the community and here at Temple Sinai it is no different. We meet as a youth community to do various social action, and service projects then continue the day with some fun and excitement around our town. This event has many different parts to make sure the kids and teens at Temple Sinai have a fun and a meaningful experience. From planning and organizing the social action projects to picking the trip and making sure the snacks are good, it takes a lot of work. So, how does all that happen? This year I have gathered an all star team of experts on fun, and knowing what kids and teens want the kids and teens themselves! Now, this is not a new idea, but perhaps you were not aware of the hard work this team puts in.

It starts out by visiting the 6th, 7th and 8th grade religious school classes. I ask for volunteers who want to share their vision and dreams for this program. After I gather the names of volunteers we set up meetings using Remind and texts to communicate. The first meetings are to brainstorm ideas and see what is actually possible. Throughout the planning process we meet a few more times, to get more ideas, work out any issues that arise, and decide who will lead what and when throughout the day or evening. This year it was decided with the help of the committee to have a sleepover for the middle school age kids and have the younger kids go home at 9:00pm. The kids and teens have planned every aspect of this day and evening, from deciding what service projects we will offer, a visit from Nellie's Schoolhouse, cooking for Aid For Friends and assembling breakfast bags for the homeless. They chose the special trip location, Urban Air Adventure Park, and the food that will be serving. With their help, this MLK Day event with all 60 plus participants will be a fun and meaningful day.

Below, you can see a snapshots of one of our meetings. Here we have some of our 8th grade leaders (Anna Levin, Jaime Letofsky, Lia Sussan and Alexa Sussan) planning, and of course no meeting would be complete without some Starbucks!



**The Award Winning Temple Sinai Players
Proudly Present Their
2019 Production**

RODGERS & HAMMERSTEIN'S

Oklahoma!

Show Dates:

February 27, 28 & March 2, 3 2019

**Oklahoma! Tickets
are going on sale:
January 27th 2019**

**Purchase Tickets at
<http://www.tsinai.com/oklahoma/>**

Tickets are \$15-\$36

Questions?

Contact: Jill - jsffitness@comcast.net

or

Tracey - teroffman@yahoo.com



COUNTDOWN TO what is Purim?

Purim is a Jewish holiday about celebration and fun. Some would say it is our most joyous holiday. The story of the triumph of Queen Esther is widely known, but what are some things you may not know about our holiday of Purim?

1. Esther was a vegetarian (or at least a flexitarian).

According to midrash, while Queen Esther lived in the court of King Ahasuerus, she followed a vegetarian diet consisting largely of legumes so that she would not break the laws of *kashrut* (dietary laws). For this reason, there is a tradition of eating beans and peas on Purim.

2. You're supposed to find a go-between to deliver your mishloach manot, the gift baskets traditionally exchanged with friends and family on Purim. The verse in the Book of Esther about mishloach manot stipulates that we should send gifts to one another, not just give gifts to one another. As a result, it's better to send your packets of goodies to a friend via a messenger, than to just give them outright. Anyone can act as a go-between, so feel free to recruit the postal service or even that nice guy in the elevator to help you deliver your gifts.

3. In 1945, a group of American GI's held belated Purim services inside Nazi propagandist Joseph Goebbels' confiscated castle. According to JTA coverage at the time, the Jewish chaplain "carefully arranged the candles over a swastika-bedecked bookcase in Goebbels' main dining room," and Jewish soldiers explained to their Christian comrades in attendance "about Haman and why it was so fitting that Purim services should be held in a castle belonging to Goebbels."

Want to learn more? Visit www.myjewishlearning.com to find the full article!



Nutella Rugelach

Author: Amy from whatjewwannaeat.com

Prep: 25 mins | Cook time: 25 mins | Total time: 50 mins | Yields: 48 cookies

Ingredients:

½ cup of sugar, plus more for sprinkling	½ cup hazelnuts, chopped (or walnuts)
¼ teaspoon salt	1 small (13 oz) can Nutella
2 cups all-purpose flour	2 egg yolks and 1 teaspoon water, whisked, for egg wash
2 sticks cold unsalted butter, cut into chunks	
8 oz cream cheese, cut into chunks	
⅓ cup sour cream or Greek yogurt	
2 teaspoons vanilla extract	

Directions:

1. In a medium bowl, whisk together sugar, salt and flour. Place flour mixture, cold butter and cream cheese in a food processor and pulse just until combined. You should have a crumbly dough. Then add in sour cream and vanilla. Pulse just until combined into a clumpy dough. Do not overmix. This can also be done with a stand or hand mixer if you do not have a food processor. Just let butter and cream cheese come to room temperature.
2. Lightly flour a clean surface and dump dough onto the surface. Divide the dough into four equal sized balls (I use a scale) and flatten each into a disk. Dough will be slightly sticky. Wrap each disk in saran wrap and chill for two hours or ideally overnight. **I can't stress enough how important it is for you to chill the dough for at least two hours.** It also freezes well for up to 2 months.
3. Pre heat oven to 350 F.
4. Roll out each ball into a 9 inch circle on a floured surface into a circle, keeping the other balls in the fridge until you are ready for them. Make sure to use enough flour to prevent sticking.
5. Spread a thin layer of Nutella on the circle, sprinkle with sugar and hazelnuts. Cut the circle into 12 triangles like a pizza. Roll up each triangle from the wide end, and secure the tip into the cookie so you have a little spiral. Place cookies on a parchment lined cookie sheet, and freeze for 30 minutes to prevent spreading. Repeat with other balls.
6. Brush rugelach with egg wash, sprinkle with more sugar and bake for 25 minutes or until golden. Cool for 5 minutes on the cooking sheet and then finish cooling on cooling rack.

S'mores Hamentashen

From ItCouldntBeParve.com


Cook time: 10 minutes | Yields: 3 1/2 Dozen

Ingredients:

3 cups unbleached all-purpose flour	5 tablespoons almond or soymilk
1 cup dark brown sugar, lightly packed	2 tablespoons pure vanilla extract
1/2 teaspoon baking soda	12 tablespoons marshmallow fluff
3/4 teaspoon kosher or coarse sea salt	2-3 ounces finely chopped chocolate
3 1/2 ounces margarine, cut into 1-inch cubes and frozen	
^(if using salted margarine decrease salt slightly)	
1/3 cup mild-flavored honey, such as clover	

Directions:

1. Combine the flour, brown sugar, baking soda, and salt in the bowl of a food processor fitted with the steel blade or in the bowl of an electric mixer fitted with the paddle attachment. Pulse or mix on low to incorporate. Add the margarine and pulse on and off on and off, or mix on low, until the mixture is the consistency of a coarse meal.
2. In a small bowl, whisk together the honey, milk, and vanilla extract. Add to the flour mixture and pulse on and off a few times or mix on low until the dough barely comes together. It will be very soft and sticky. Lay out a large piece of plastic wrap and dust it lightly with flour, then turn the dough out onto it and pat it into a rectangle about 1-inch thick. **Chill it until firm, about 2 hours or overnight.**
3. Preheat the oven to 350. Remove half of the dough from the refrigerator and roll it out between two pieces of parchment paper. Cut out circles using a round cookie cutter or the top of a drinking glass and transfer the circles to a parchment lined cookie sheet. (If the dough gets too sticky while working with it place the parchment with the dough on a cookie sheet in the freezer for a few minutes).
4. Fill four of the circles with a small amount of marshmallow fluff (less than a teaspoon) and sprinkle with a small amount of chocolate. Marshmallow fluff is very sticky so the easiest way to push it off the spoon onto the hamentashen is with a slightly wet finger. Use significantly less filling than might seem right because marshmallow fluff expands in the oven. For 2 1/2 inch circles use a scant teaspoon fluff. Fold up two sides of the circle and pinch them together. Lift the third side and pinch the remaining two corners closed. Repeat with the remaining circles. (It is important to fill no more than four hamentashen at a time because marshmallow fluff begins to ooze as soon as it is spooned out onto the dough and the hamentashen need to be folded before the filling has oozed too much). Roll out and fill the remaining dough.
5. Bake the hamentashen for 8-10 minutes, or until set. Transfer to a cooling rack and let cool completely before enjoying

COUNTDOWN TO  How TS is *Celebrating*

21+ Purim Party

.....
Cocktails and spirits, full Megillah reading,
food, ping pong and more



March 20th

Ping Pong

PURIM

Serving up fun for all ages
Megillah Reading, costumes, food,
ping pong, face painting and more

March 20th





SEND SHALACH MANOT PACKAGES TO LOVED ONES!

*Send a package to someone you care about this Purim.
See the prices below*

- 1st ten packages \$12.00 each • Additional packages \$7.00 each
- 2nd ten packages \$9.00 each • Teacher & Staff packages \$7.00 each
- non-Temple Sinai members & non-pre-school families \$14.00

**SAVE TIME,
ORDER ONLINE!**

tsinai.happypurim.com

PURIM BEGINS MAR. 20TH 2019

ORDER DEADLINE IS TUES., FEB. 26TH 2019

It's an easy, convenient and secure way to purchase your baskets! Payment can be made by credit card or by check (sent later). You will receive a welcome email with your personalized code and instructions on placing your order. If you don't receive this email, please contact a committee member.

LOOKING TO VOLUNTEER WITH OUR COMMITTEE?

Volunteer to get involved in the fun! Our *Shalach Manot* Assembly Day is Tuesday, March 12th at 9:00 A.M. For more info, please call: Ruth Segal (267-977-0370), Marlene Zubrow (215-641-9682), or Sarah Vogel (215-563-5639). You can also reach us at purimorders@gmail.com

ORDER FORM BELOW



SHALACH MANOT ORDER FORM

Your Name _____ Your Phone _____

Please include a list of the Shalach Manot recipients & indicate whether they are Temple Sinai members.

Total packages for Temple Sinai Members, Sisterhood Members and Pre-School Families.:

@ \$12 _____ \$9 _____ \$7 _____ Non-Member/Non-Pre-school baskets @ \$14.00 _____

Check enclosed payable to **Temple Sinai Sisterhood** for total of \$ _____

Mail to: **Marlene Zubrow**
1431 Barton Drive
Fort Washington, PA 19034

Please note: Packages ordered for synagogue members will be delivered, if possible, by Sisterhood volunteers living in the same neighborhoods. If delivery cannot be arranged, you will be called. Packages ordered for non-synagogue members cannot be delivered, but can be picked up at Temple Sinai.



WITH TEMPLE SINAI

what is *Tu B'shevat*?

Tu B'Shevat is the 15th day of the Hebrew month of Shevat. The name of the holiday is actually the date of the holiday. The word "Tu" is spelled with the Hebrew letters tet and vav which have the numerical values of 9 and 6 and when placed together equal 15. The holiday is also called "Rosh HaShanah La'Ilanot" - literally "New Year of the Trees." The holiday is not mentioned in the Torah, but it is mentioned in the Mishna, a code of Jewish law compiled in approximately 220 CE. We are taught in the Mishna that there are 4 New Years and Tu B'Shevat is the one which marks a new year for the trees of Israel. This was an important factor in ancient Israel when a Jewish farmer had to know the number of years a tree had existed in order to determine when the fruit of that tree could be harvested.

Today, Tu B'Shevat is celebrated in a variety of ways. In Israel, it is a day on which children and adults are given the opportunity to plant trees. Those of us who live outside of Israel can symbolically plant a tree in the holy land by purchasing a tree (or many trees) through the Jewish National Fund. One can also attend a Tu B'Shevat Seder, which like the Passover Seder is a ritual involving eating (a variety of fruits and nuts grown in Israel), drinking 4 cups of wine (each cup a different shade, representing the seasons of the year), and a special liturgy consisting of stories, songs and prayers. If you can't attend a seder, try eating one or more of the 7 species of Israel (wheat, barley, grapes, figs, pomegranates, olives, and dates) or maybe some bokser (the fruit of the carob tree). Tu B'Shevat is a great time of year to celebrate not only the importance of trees, but our valuable connection to the Land of Israel!



How TS is Celebrating

Temple Sinai Sisterhood's 7th Annual Tu B'Shevat Seder

Wednesday, January 23, 2019
6:30 PM in the conference Room

Reservations Required

Please join us for a lovely evening as we celebrate a New Year for the Trees. Celebrate the abundant gifts of the natural world which delight our senses and give us sustenance.

We will enjoy holiday fruits, nuts, juices and wines...

RSVP to sara.wenger3@gmail.com by Friday, January 18th to be included!

To reserve attendance, please send \$5.00 made out to Temple Sinai Sisterhood to :

Sara Wenger
811 Alene Road
Ambler, PA 19002

The Seder is sponsored in loving memory of Sara's mother, Perle Hoffman, by her family.

CELEBRATE



WITH TEMPLE SINAI

January 21st, 2019

- Morning Minyan at 7:30 am,
Evening Minyan at 7:30pm
- Sisterhood Tu B'Shevat Seder is Jan. 23rd

adult education hazak news

Marty & Gail Weiss



Welcome to 2019! We hope everyone had a wonderful holiday season.

Our Hazak programs in the Fall of 2018 were light and musical. As we begin this new year,

our program offering for 2019 will be a bit more serious:

Our February 10 program will be educational in nature. We are sure all of you followed the nomination and eventual confirmation of Brett Kavanaugh to the Supreme Court. All of the hoopla surrounding his nomination and confirmation enabled us to learn quite a bit about his life, and what experiences have influenced his decision making. But what do we really know about the other Supreme Court Justices? We have several female Justices who have grown up and served during the women's movement. We wonder how this movement has affected and influenced their decision-making on the Court.

We hope to get answers to some of these ques-

tions as we are joined by Trish Chambers, historian and author. Chambers introduces us to the lives of the four female justices who have served on our Supreme Court: Sandra Day O'Connor, Ruth Bader Ginsberg, Sonia Sotomayor and Elena Kagan. Please join us for a brunch and discussion at 10am as we learn how these women rose to take a seat on the highest court in our country.

On March 24, we will again turn to music as our form of entertainment. We welcome you to listen and enjoy Klezmer music. This lively performance will lift your spirits as we anticipate the arrival of spring and yet another holiday season. We look forward to seeing you all there.

Please add these dates to your calendar as well:

- 2.7.19 Make-up date for AARP driving program, if necessary
- 2.10.19 Brunch and Supreme Court Judges program
- 3.24.19 Brunch and program, featuring Jack Kessler and his Klezmer Music Group
- 5.8.19 Offsite program (date subject to change)
- 6.22.19 Hazak Shabbat
- 6.23.19 Year-end brunch and program, featuring Cantor Freedman

Please watch for updates in ChaiLights and the flyers we will be sending out with further program details.

adult ed classes *continued Jewish learning*

Adult Ed w/
Faith Rubin

Back To The Beginning
Thursdays @ 10:30am
(in the conference room)

Check online calendar for date exceptions.

Adult Ed w/
Rabbi Wohlberg

Exploring Our World Through
a Jewish Lens

Wednesdays @ 9:30am
(in the conference room)



Book Club Schedule has changed.

Please be sure to check our website for an updated version of the calendar.

sisterhood news

Amy Brady & Beth Chernoff

Co-presidents

Beautiful Queen Esther—alone in the palace, hiding her religious identity—would certainly have benefitted by a sisterhood of strong Jewish women. But no doubt she would be proud of the way our Sisterhood continues to celebrate Purim at Temple Sinai. *Shalach Manot* packing will take place on March 5, and we can sure use all hands for this major effort. On March 31, Sisterhood will host a brunch honoring Ruth Segal (one of the tireless coordinators of the *Shalach Manot* project) as the Torah Fund “Woman of Achievement” for 5779.

Speaking of Torah Fund, 80 women (and a few men) of the Mid-Atlantic Region celebrated the 100th anniversary of the founding of Women’s League at a special Torah Fund/Founder’s Day event on November 18, where our own Jill Florin was one of the dynamic panelists. Some had never been to Temple Sinai before, and commented on the beauty of the building—especially the gift shop. Please enjoy the photos taken by Karen Petkun at the Torah Fund/Founder’s Day event, especially the one where Temple Sinai Sisterhood is awarded for having met our goal.

A note of appreciation goes to Debbie Krochtengel and Karen Petkun, who coordinated our November partnership with Scarlet Begonias, the funky Flourtown boutique. A percentage of the sales came to Temple Sinai, and Debbie presented our Sisterhood with an extraordinary Chanukah gift. Thank you, also, to Sara Wenger, who always nourishes the soul with her annual Tu B’Shevat Seder. We look forward to Sisterhood Shabbat on February 2, where members conduct the entire service. Also, plan to celebrate Valentine’s Day at Act II Playhouse; the play about Ruth Westheimer (*Becoming Dr. Ruth*) is sure to set the proper mood. Finally, a shout-out to the 75 women who came together at the Membership Appreciation Dinner on December 3. What a wonderful feeling to watch dozens of women lighting Chanukah candles and singing the blessings—all at the same time. Thank you to our gift shop coordinators, Stacy Pressman and Stacy Flickstein for leading us in candle lighting, and to Karen Wendkos for the loan of her majestic *chanukiah*. How fortunate we are to be able to come together to celebrate our religious customs freely!



5779 Sisterhood Calendar of Events

1/5	Rosh Chodesh discussion group	3/9	Rosh Chodesh discussion group
1/23	Tu B’Shevat Seder led by Sara Wenger	3/31	Torah Fund Brunch, honoring Ruth Segal
2/2	Sisterhood Shabbat	4/6	Rosh Chodesh discussion group
2/14	Sisterhood @ ActII Playhouse	4/8	Spring Event
2/16	Rosh Chodesh discussion group	5/6	Installation
3/5	Shalach Manot Assembly		



TORAH FUND HONOREE



A longtime member of Temple Sinai, Ruth Segal has been actively involved at the synagogue since she and her husband Steve moved to Dresher in 1978. They both proudly participated in the Torah processional to escort the Torahs to their current location.

Ruth grew up on the North Shore of Boston and has deep roots in the community. Ruth's parents Agnes (ר"ב) and David Young (ר"ב) were great role models for

becoming involved in synagogue life, and they instilled in her the importance of a strong Jewish education.

Ruth graduated from Brandeis University, including a semester at Tel Aviv University, with a Bachelor of arts in Judaic Studies, and concurrently earned a Bachelor of Hebrew literature from the college division of Hebrew College. Ruth then went on to receive her law degree from Washington University in St. Louis, where she met Steve.

Ruth has held numerous roles in Sisterhood, including vice president of programming, but her passion for the last 20 years has been bringing the joy of Purim to everyone by co-chairing the Sisterhood's successful *Shalach Manot* project with her wonderful committee, and ensuring the project's sustainability by creating web-based ordering.

Ruth is a longtime supporter of Torah Fund and JTS. For many years she has been a double benefactor always purchasing an additional Torah Fund pin for her mother, Agnes (ר"ב). Ruth plans to continue her tradition of purchasing a second Torah Fund pin to give to her daughter Andrea, who looks forward to upholding the tradition and honoring Andrea's grandmother's memory.

Please look for your invitation to follow and join us for this wonderful event.

sisterhood jewish living

Joan Winokur

January and February 2019, they are the end of Tevet, the month of Sh'vat, and most of Adar Aleph. Yes! 5779 is a leap year. We have Adar I and Adar II. During She'vat we have a one-day Rosh Chodesh and Tu B'Shevat, the new year of trees. Come to the Sisterhood Tu B'Shevat Seder for a meaningful and delicious experience.

Are we "doubly" happy because there are two Adars? Not exactly. During Adar I we do have a two-day Rosh Chodesh. If you celebrate them as the "women's half-holidays they are, that's fun, but you have to wait for Adar II for the full happiness—"Be happy, It's Adar for Purim." Enjoy every day. May you have a healthy, happy, successful *nachas*-filled (pride-filled) secular new year.

Happy 2019!

Contributions: Thank You For Your Support 11/1 - 12/31/18

Florence H. Albert Preschool Activities

In Memory of *Donor*
Samuel Podolsky Robin Goldblum and Ann Beth Goldblum

Boy Scout

In Honor of *Donor*
Birth of Carsyn Ruth Sherwood
Birth of Jonah Dwyer Coughlin Frank & Roz Romanoski & Family

In Memory of *Donor*
Samuel Fein Daniel Fein
CP (Bob) Dwyer Deborah Fein
Mark Field Gregory Field
Emanuel "Manny" Reider Vivian & Barry Morrow

Risë Bressler Chesed

In Honor of *Donor*
Ethan Span becoming a Bar Mitzvah Barbara & Jeffrey Fierstein
Birth of Jonah Dwyer Coughlin
Birth of Carsyn Ruth Sherwood Sherrie & Nelson Klein
In Memory of *Donor*
Edward J. Ross Helene Ross
Abe Sussman Mark Sussman
Dr. Murray Rosenberg Sheryl Klein

Cantor's Charity

In Honor of *Donor*
Cantor Stephen Freedman Alan & Julie Gubernick
Jeffrey Workman being named FJMC MAR Man of the Year Bonnie & Bill Kanefsky
Randi & Cantor Stephen Freedman's anniversary
Joan Winokur
Betsy Lewinson's special birthday Ralph & Ellen Levin
Cantor Stephen Freedman Susan & Paul Bratt
The Family of Jules Erdberg
In Memory of *Donor*
Father of Russ Sacks Betsy & Frank Lewinson
Louis Kazansky Bonnie Kanefsky
Reba Stredler Feldman Howard Stredler
Emanuel "Manny" Reider Judith Reider
Steven Reider
Dr. Owen Belmont Maxine Weinstein
Sol Nirenberg Nanette Schrifman
Murray Milrod
Helen Milrod Robert Milrod
William Beck Rose Beck
Martin Gubernick Vicki & Howard Edelman
Lena Epstein Yonina Schuchman

Chernoff Interfaith Activities

In Memory of *Donor*
Marty Ersner Krendelle & Stanley Noshery
Albert Noshery Stanley & Krendelle Noshery

Cook For A Friend

In Honor of *Donor*
Marriage of Erica Bratt & Gary Brown Phil & Marlene Belkin

In Memory of *Donor*
Fannie Roseman Bernard Roseman
Anne Schildkret Bonnie Shanis
Abraham Brodsky Ellen Spear
Jesse Kohen Francine Kohen
Sheldon Adler Harriet & Phil Weinstein
Vera Glick Ilene G. Blatman
Dorothy Klein Robert Klein
Isidore Lieblein Sheila Katz

Abby Cooper Religious School Scholarship

In Honor of *Donor*
Speedy recovery for Chana Dickter
Temple Sinai Religious School Teachers

In Memory of *Donor*
Dr. Jeffrey Cooper Harriet Cooper
Alan P. Levin The Jakubowitz Family

Lilly Dubin Children's Garden

In Memory of *Donor*
Gertrude Levine
Ellen Ross Helene Ross
Robert Thomas Lindner Jen & Mike Thomas & Family
Debra Strauss Samuel Silverman
Alan P. Levin The Kidorf/Sitkoff Family

Florence & Rubin Dworkin Scholarship

In Honor of *Donor*
Ethan Span becoming a Bar Mitzvah
Eli Check becoming a Bar Mitzvah Dina & Hal Rovner & Family

In Memory of *Donor*
Jonathan Seligsohn Jackie Silverman
Alan P. Levin Lisa, & Paul Rovner & Family

Martyn S. & Fannie Goldstein Minyan

In Honor of *Donor*
Temple Sinai Daily Minyan Alan & Julie Gubernick
Sherry Kohn Eisman
Birth of Maya Stav Busch Faye Laveson
Gail & Marty Weiss
Joan Winokur
Maxine & Asher Stutman
Myrna & Larry Allen
Faye Laveson's birthday Flossie Albert
Dani Frankel becoming a Bat Mitzvah Jodi Frankel
Birth of Sidney Chaya Namerow Myrna & Larry Allen
In Memory of *Donor*
Isador Schechter Ada Fishman
Elaine F. Katz Alan Katz
Martin Gubernick Andi Becker-Arnold
Joan & Bob Parkin
Norman B. Cooperman
Sheldon Adler
Martha "Marti" Bernard Barbara Goldstein
Irving Polsky Carl Polsky
Anne Rosedale Diane & Don Factor
Bertha Ida Factor Don & Diane Factor
Anna Silverstein
Solomon Matusow
Sophie Laveson Faye Laveson
Their Simchat Torah honor Gail & Marty Weiss
Helen Greebel Gushinsky
Max Greebel Gail Weiss
Stanley Abrams
Bertha Katz
Esther Katz Harold Katz
Arthur Beyer
Marvin Cogan Herma Abramson & Family
Natalie Cohn Jeffrey Cohn
Nessa Graub Jonathon & Marlene Graub
Clara Strauss
Mary Strauss
Jacob Strauss Marcie Cohn
Ed Bennett Marge Listman
Hanley D. Cohn Nadine Canter
Fannie Gendelman Neilson Gendelman
Ruth Wenger Robert Wenger
Perle Hoffman Sara Wenger
Bella Isele Sheila Gendelman
Martin N. Berman Stanton Weinstein

Rabbi & Hilda Greenberg Scholar-in-Residence

In Memory of *Donor*
Martin Gubernick
Shira Greenberg Ruskay Flossie Albert
Hal P. Blum Lee & Lisa Blum
Samuel Shapiro
Eli Stock Marilyn Stock

Guess Who's Coming to Shabbas Fund

In Honor of *Donor*
Their 24th anniversary and upcoming trip to Israel
Debbie Albert & Glen Feinberg

Handicap Accessibility

In Honor of *Donor*
Marriage of Erica Bratt & Gary Brown Frank & Roz Romanoski & Family

In Memory of *Donor*
Kitty Flacker Diane & Henry Goldberg
Lewis Lyons Marcy Lyons Gohen & Family

Richard Harris Memorial

In Memory of *Donor*
William Leventhal Jerome Leventhal, Mark and Edward

David Hertzberg Scholarship

In Honor of *Donor*
Debbie Albert & Glen Feinberg's 24th anniversary and their upcoming trip to Israel Flossie Albert
In Memory of *Donor*
William Ehrlich Flossie Albert

Holocaust Education

In Memory of *Donor*
Martin Gubernick Becky & Roy Jackel
Samuel R. Jorovsky
Eunice Jorovsky Judith Marku
Jack Adler Martin Adler
Louis Yarrow Phyllis Gardner
Louis Katz Stuart Katz

Imagine 613

In Honor of *Donor*
Jeffrey Workman being named FJMC MAR Man of the Year Frank & Roz Romanoski

Martin Josephs Library

In Honor of *Donor*
Dottie Singer's special birthday Harriet & Phil Weinstein
In Memory of *Donor*
Muriel "Mimi" Field Gregory Field
Hilma Cramer Ilene & Stu Fredd

Kiddush & Oneg Shabbat

In Honor of *Donor*
Dani Frankel becoming a Bat Mitzvah
Birth of Maya Stav Busch
Birth of Carsyn Ruth Sherwood
Jeffrey Workman being named FJMC MAR Man of the Year Farrah, Larry and Daniela Barow
In Memory of *Donor*
Martin Gubernick Farrah, Larry and Daniela Barow

Louis & Hester Laver Youth Activities

In Memory of *Donor*
Jacquelyn Madvedoff Ann Cole

Petluck Memorial Fund for Israel

In Memory of *Donor*
Robert Savage Howard Savage
Philip Essner Phyllis Gardner
Judith Nothmann Stephen Kasloff

Cissy Plotnick Scholarship

In Honor of *Donor*
Birth of Scarlett Bryn Morgan
Engagement of Jason Saruya & Marlee Glustoff Temple Sinai Preschool Teachers
In Memory of *Donor*
David Gross Janice Inselberg and Joanne Black
Alan P. Levin Jen & Mike Thomas & Family

Prayer Book

In Honor of *Donor*
The 50th anniversary of Barbara Rosenau's Bat Mitzvah Karen & Bill Petkun
In Memory of *Donor*
Elaine Span Craig Span
Dr. Joseph Reider Emanuel Reider
Dorothy A. Tickner
Mildred Abrams Stephen Kasloff
Carole Cohn Stuart Goldsmith

Rabbi's Charity

In Honor of *Donor*
Rabbi Adam Wohlberg Alan & Julie Gubernick
Helen Feinberg & Family
Rhona Jasner & Family
Susan & Paul Bratt
The Family of Jules Erdberg
Zoe Krochtengel's baby naming Debbie & Alan Krochtengel
Jeffrey Workman being named FJMC MAR Man of the Year Joyce & Peter Klugherz
Betsy Lewinson's "70 plus 13" event Judy & Larry Kessler & Family
Karen & Bill Petkun
In Memory of *Donor*
Rae Libove Alan Libove
Dusia Paulan Batame Hertzbach
Martin Gubernick Charlene & Ira Rosenbloom
Sam & Jodi Silverman
Sylvia Hartenbaum David Hartenbaum
Sarah Moss David Hartenbaum

Rabbi's Charity (continued)

<i>In Memory of</i>	<i>Donor</i>
Esther B. Furman	Harriet Cohn
Ronald Dubin	Harriett Dubin
Rose Koppelman	Howard Stredler
Emanuel "Manny" Reider	Judith Reider
.....	Steven Reider
Manfred Schoen	
Charles Cooper	Kurt Schoen
Betty L. Borowsky	Mark Borowsky
Jules Erdberg	Michelle & David Berk
Bernard W. Cohen	Paul Cohen
Faye Zuckerman	Ronnie & Len Karp
Sydney Robert Gordon	Sam & Jodi Silverman
Irene Wilk	Sanford Wilk
Morey Singer	Sena Singer
Paul Flacker	Sheryl Stern
Murray Bidner	Stephen Kasloff
Frances Frank	The Frank Family

Ruth & Budd Rockower Dues Assistance

<i>In Memory of</i>	<i>Donor</i>
Robert Seskin	Lester Seskin

Albert & Rose Rubenstein Children's Library

<i>In Memory of</i>	<i>Donor</i>
Reubin Starr	Renée Starr

Faith Rubin Scholarship

<i>In Honor of</i>	<i>Donor</i>
Frank Romanoski	
.....	Faith Rubin's Thursday Morning Class
Marriage of Evan Footer & Aditi Srivastava	
.....	Jan & Jeff Nossbaum
Birth of Austin Chase Isaacs	
Birth of Carsyn Ruth Sherwood	Susan & Paul Bratt
<i>In Memory of</i>	<i>Donor</i>
Jules Erdberg	Bonnie & Bill Kanefsky
Doris Waxler	Cindy & Stu Lamberg
Esther Rachel Olim	Dave Olim
Judith Gould	Jerome Caplan
Audrey G. Bratt	Paul Bratt
Bernard Fisher	Renata Fisher

Bennett Solomon Ramah Scholarship

<i>In Honor of</i>	<i>Donor</i>
Birth of Carsyn Ruth Sherwood	Mary & Nathan Relles
<i>In Memory of</i>	<i>Donor</i>
Marvin Ettinger	Amy Field
Adeline Shilling	
Milton Shilling	Barbara London
Martin Gubernick	Lauren & Jeff Gladstone
Morris Katz	Linda Schatz
Frances Frank	Rabbi Adam Wohlberg
Saul Weinstein	Stanton Weinstein
Robert Thomas Lindner	The Jakubowitz Family

Temple Sinai Floral

<i>In Memory of</i>	<i>Donor</i>
Hilda Kulman	Hilary Kulman Slobotkin

Temple Sinai General

<i>In Honor of</i>	<i>Donor</i>
Betsy Lewinson's 83rd birthday. Blanche & Stuart Weinberg	Gerald & Penny Appelbaum
.....	Harriet & Phil Weinstein
Jeffrey Workman being named FJMC MAR Man of the Year	Iz & Edith Milner
Noa Shapiro becoming a Bat Mitzvah	
.....	Judy & Matthew Schure
<i>In Memory of</i>	<i>Donor</i>
Alan P. Levin	Amy & Dan Rosenberg
Emanuel "Manny" Reider	Bonnie & Bill Kanefsky
.....	Hilda Gross
.....	Ilene Marcus & Tom Eichenbaum
Jules Erdberg	Debbie & Alan Krochtengel
.....	The Bilsky Family
Martin Gubernick	Debbie & Alan Krochtengel
.....	Debbie & Brian Wilk
.....	Jill & Jeffrey Hampton
.....	Sally & Len Grossman
Hyman Cohen	Diane Sovel
Ronald Grober	Elise & Jeff Weisman & Family
Bonnie Gohen	Mark Gohen
Carol Gohen	Mark Gohen & Family
Marvin "Uncle Marv" Domsky	Sally & Len Grossman

Pearl & Ted Weitz Scholarship

<i>In Honor of</i>	<i>Donor</i>
Noa Shapiro becoming a Bat Mitzvah	
Julia Axler becoming a Bat Mitzvah	
Lauren Steinberg becoming a Bat Mitzvah	Marci & Stu Weitz & Family
<i>In Memory of</i>	<i>Donor</i>
Lillian Bellin	Arleen Weitz
Julius M. Stredler	Howard Stredler
Nettie Mazer	
Dr. Howard Mazer	Marci & Stu Weitz
Jules Erdberg	Marci & Stu Weitz & Family
Anna Weitz	
Samuel Gluck	Stu & Marci Weitz and Arleen Weitz

Bruce Winokur Memorial

<i>In Memory of</i>	<i>Donor</i>
Abe Raivy	Hazzan Arlyne Unger
Benjamin Gelman	
Emanuel "Manny" Winokur	
Goldie Lyons	
Eleanor Liss	Joan Winokur
Dr. Joseph Michaels	Mike Michaels
Emanuel "Manny" Winokur	Steven Winokur

Yahrzeit

<i>In Memory of</i>	<i>Donor</i>
Miriam Shatzman	Aaron Shatzman
Ruth Fagan	Bruce Fagan
Betty Kurtzweig	Diane DeHart
Ida Scheinholtz	Doris Izes
Bernice Kidorf	Greg Kidorf
Morris Friedman	Helen Rosenfarb
Murray Fingerth	Ilene Fredd
Sarah Goldstein Cooper	Janet Rosen
Virginia Tanur	Janis Dunn
Jerome Ellick	Joan Parkin
Yetta Toplin	Judy Blumberg
Gerda Stamm	Kurt & Lorrie Lichtenfeld
Martin Gubernick	Maddie & Herman Axelrod
Edith Blumstein	Marcy Lyons Gohen & Family
Charles Buckman	Maxine Stutman
Garry Sherman	Monna Schwartz
Bernie Osser	Nancy Goldsmith
Samuel Ginsberg	Ronda Karp
Rev. Louis Rosenthal	Ruth Fisher
David Young	
Harry Kazis	
Emma Young	
Anna R. Kazis	Ruth Segal
Joseph Newman	Sheila Newman
Kathryn Haberman	Stanley Steinberg
Meriam Rosen	Steven Rosen
Roger Vega	The Kaminsky Family



Temple Sinai owns a
dedicated section
at

King David **MEMORIAL PARK**

Cemetery lots are available
Individual
Family Groups

Call Temple Sinai's office for information
215-643-6510

PEACE OF MIND – OBTAIN IT NOW

When there's a death in the family, decisions tend to be colored by grief, not governed by reason. You can save your family unnecessary stress by purchasing your gravesite now and prearranging your funeral.

Buying a cemetery plot is a decision you can make today for a time when your family must go on without you or a loved one. Making these inevitable decisions during a time of calm and clarity will ease the burden faced by your loved ones and will ensure that your wishes are fulfilled.

In order to address our congregants' needs, Temple Sinai purchased grave sites at nearby King David Memorial Park in Bensalem. These are available to members and their families at a reasonable price, substantially less than at other cemeteries.

For additional information please call the Temple Sinai office,

215-643-6510 or
www.tsinai.com

ADVERTISE YOUR BUSINESS WITH THE TEMPLE SINAI NEWS



Judaica • Serving Dishes • Gift Items
Kids' Stuff • Jewelry • Wine
and so much more!!!!

10-1 and 4-9 Tuesday
10-1, Wednesday and Thursday
9:30-3, Friday
9:30-1:30, Sunday

New items arriving weekly!

We are always happy to open by
appointment at another time.

Contact

Stacy at 215.802.0691.

**Morey, Nee, Buck & Oswald are proud
to partner with Temple Sinai**

Morey, Nee, Buck & Oswald, LLC

Certified Public Accountants and Advisors

1120 N. Bethlehem Pike 2571 Bayliss Circle 117 West End Avenue

PO Box 457

Suite B 20

#201

Spring House, PA 19477 Bethlehem, PA 18020 Somerville, NJ 08876

610-882-1000 • www.moreycpa.com



KRASSENSTEIN & UNGER, LLC
CERTIFIED PUBLIC ACCOUNTANTS

Ronald A. Unger, CPA



100 West Avenue • Suite 916-W
Jenkintown, PA 19046

tel: 215-887-5950 • ext: 219

fax: 215-887-5066

email: runger@KUaccountants.com

www.KUaccountants.com



**BRANDYWINE LIVING AT
DRESHER ESTATES**

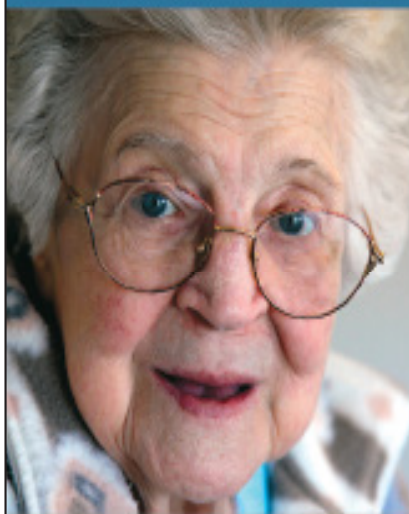
Life is Beautiful

1205 N Limekiln Pike | Drescher, PA 19025
215.591.4000 | www.brandycare.com

**ADVERTISE YOUR
BUSINESS HERE**

CONTACT US ON HOW TO ADVERTISE
IN THE TEMPLE SINAI NEWS.

Helping to care for the people you love!



Flexible schedule

Care for anyone
recovering from
surgery or illness

Short- or long-term

Hourly, daily, or
live-in schedule

Independently
owned

SILVER LINING™
HOME HEALTHCARE, INC.

215-885-7701

www.slhomecare.com

PA State Licensed / All caregivers are bonded and insured



LIVE YOUR BEST LIFE

Experience the Barbara Brodsky Suites at Lankenau Medical Center

You value knowledge. You value exceptional medical care. You value privacy.

When you need to be in the hospital, you can find exceptional medical care in an elegant healing environment at Lankenau Medical Center, part of Main Line Health. During your stay in the artfully appointed Brodsky Suites, you will have a personal concierge to see to your needs, deluxe amenities to make your stay more comfortable and quiet, private living and dining areas for you and your family. It's these extras that create an incomparable experience.



To see a virtual tour of the Barbara Brodsky Suites, visit mainlinehealth.org/Brodsky. To check availability, call 484.476.6180 or email BrodskySuites@mlhs.org.

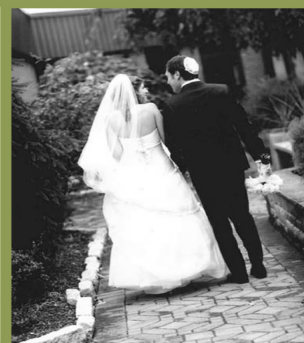
LESTER MARTIN jewelers

Diamonds
Watches
Gifts
Jewelry & Watch Repairs
Gold, Platinum, Silver
& Estates Purchased
Appraisals

Dreshertown Plaza
1650 Limekiln Pike
Dresher, PA. 19025
267.470.4771
LesterMartinJewelers@gmail.com
www.LesterMartinJewelers.com

We Dress Up Nice!
Contact us today about
scheduling your
wedding,
Bar/Bat Mitzvah celebration,
or other simchas at
Temple Sinai!

www.tsinai.com 215.643.6510



Wealth Development Group, LLC

The GPS for your financial planSM
*Creating opportunities to help clients add value
to their lives*

Ask about our complimentary portfolio risk analysis

And our Retirement Income Strategies

Securities & Investment Advisory Services

Qualified Longevity Annuity Contracts

Life Insurance & Annuities

Family Legacy Planning

Long Term Care Insurance

Pre- & Post Retirement Income Planning

Alan D. Katz, ChFC, CLU AEP, CRC®, CWS®

P.O. Box 777, (1352 Easton Rd.), Warrington, PA 18976-0777

Voice (215) 491-1520 FAX (215) 491-1819 email info@wdg-llc.com

Advisory Services offered through Investment Advisors, a division of ProEquities, Inc., a Registered Investment Advisor. Securities offered through ProEquities, Inc., a Registered Broker/Dealer, and member FINRA and SIPC. Wealth Development Group, LLC is Independent of ProEquities, Inc. .



ADVERTISE YOUR BUSINESS

CONTACT US ABOUT GETTING YOUR AD IN THE TEMPLE
SINAI NEWS



*Live Your Life
Just the Way
You Always
Imagined*

*Pre-planning a funeral gives you peace of mind that
everything is taken care of the way you wanted.*

Goldsteins' Rosenberg's Raphael-Sacks Inc.

Providing funeral counseling and pre-need arrangements.

215-927-5800

1-800-622-6410

www.GoldsteinsFuneral.com

For hearing impaired:
267-331-4243 (Sorenson VP)



PHILADELPHIA CHAPEL

Carl Goldstein, Supervisor
6410 N. Broad Street
Philadelphia, PA 19126

SUBURBAN NORTH CHAPEL

Bruce Goldstein, Supervisor
310 2nd Street Pike
Southampton, PA 18966

ROTH-GOLDSTEINS' MEMORIAL CHAPEL

Jason S. Goldstein · Mgr. Lic. No. 4633
Pacific & New Hampshire Avenues
Atlantic City, NJ 08401

Southern New Jersey Chapels Available



Caring. Committed. Compassionate.

CAMP GREEN LANE

Located in Green Lane, PA



Experts in creating memories and friendships that last a lifetime, since 1926.

EXCITING SPECIAL EVENTS & OUT-OF-CAMP TRIPS!



Become a part of our Camp Green Lane Family!



COED, RESIDENTIAL, 7-WEEK CAMP FOR AGES 6-16.

HALF SESSION AVAILABLE.

FULL ATHLETICS, ARTS, ADVENTURE, AND

WATERFRONT PROGRAMS.



"Where Happiness Counts"

215-234-211

info@greenlane.com www.greenlane.com

Melissa and Jay Freedman and Rene and Adam Weiner
Owners/Directors

TOP SPECIALISTS. WORLD-CLASS TEAM. Here at **Lankenau Medical Center.**

Bob Etemad, MD INTERVENTIONAL GASTROENTEROLOGY



Dr. Etemad has made it his mission to bring hope to people with advanced gastroenterology (GI) problems. Armed with state-of-the-art technology, he is able to treat and even cure diseases that were previously untreatable. Dr. Etemad is well-known as a specialist for minimally invasive approaches to pancreatic and bile duct disease, early and advanced GI cancers, Barrett's esophagus, GI bleeding and colon polyps. He and his team have performed thousands of these delicate procedures, making them one of the most experienced endoscopy teams. Dr. Etemad is pleased to bring this experience to his patients at **Lankenau Medical Center**, part of Main Line Health.



So whatever your GI concerns, let's face them together.
Here at Main Line Health, Lankenau Medical Center.
Visit mainlinehealth.org/mlhcgj or call 484.476.8390.

NONPROFIT ORG
U.S. POSTAGE PAID
FORT WASHINGTON, PA
PERMIT NO. 54
Return Service Requested

TEMPLE SINAI

1401 North Limekiln Pike, Dresher, PA 19025

Phone: 215.643.6510 • Fax: 215.643.9441

www.tsinai.com

Temple Sinai

Dresher, PA



תורה • עבודה • גמילות חסדים



Find us on
Facebook



www.tsinai.com



mainoffice@tsinai.com



215-643-6510

Adam Wohlberg, Senior Rabbi

Sidney Greenberg z"l, Founding Rabbi

Stephen Freedman, Cantor

Nathan Chaitovsky, Cantor Emeritus

Ben Wachstein, Executive Director

Shira Weissbach, Director of Education

Beth Rabinowitz, Early Childhood Director

Sydney Ciment, Youth Coordinator

Faith Rubin, Coordinator of Enhanced Education

Edy Israel, Rabbi's Assistant

Alison Houghton, Executive Assistant & Communication Specialist

Beth Berkowitz, Religious School Assistant

Marcy Lyons Gohen, Accounting

Ellen McGrother, Accounting

Lauren Gladstone, President

Jeffrey Goldstein, Executive Vice President

Harris Chernow, Vice President of Fundraising

Stephanie Sussan, Vice President of Membership

Jon Graub, Vice President of Education

Jake Sitman, Secretary

Jodi Silverman, Secretary

David Weiss, Treasurer

Don Shanis, Comptroller

Tobey Grand, Immediate Past President

Amy Brody, Sisterhood Co-President

Beth Chernoff, Sisterhood Co-President

Rob Rosenthal, Men's Club President

Marty & Gail Weiss, Hazak Co-Presidents